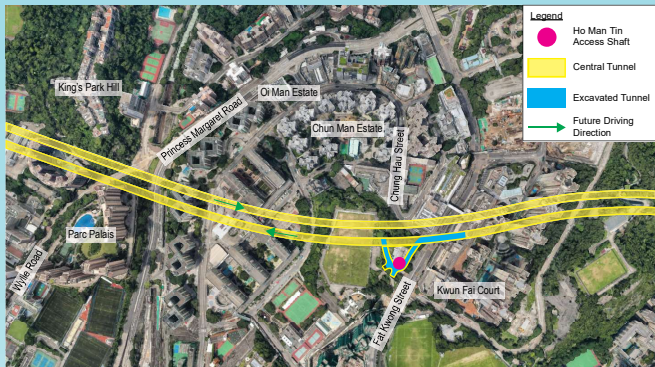


### Tunneling Works Progress



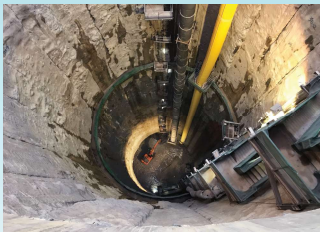
- Legend**
- Ho Man Tin Access Shaft
  - Central Tunnel
  - Excavated Tunnel
  - Future Driving Direction

Tunneling Works Progress

The blasting works for the central tunnel under the CKR project commenced in December 2019, and tunnel blasting works is now being carried out at Ho Man Tin Site.



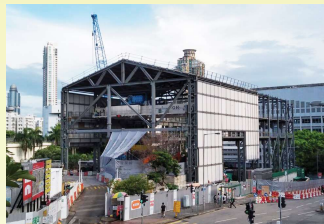
Underground condition at Ho Man Tin Access Shaft



Ho Man Tin Access Shaft

### Temporary Noise Enclosure

In order to minimize the noise and dust impacts to the nearby residents, the temporary noise enclosure is proposed to be constructed on top of the access shaft. The whole tunneling works process including spoil handling will be carried out in the temporary noise enclosure after its completion. Graphic designs will be adopted on the exterior walls of the temporary noise enclosure to blend it with the surrounding environment, minimizing visual impacts. Installation of the noise panels were in progress and the temporary noise enclosure is anticipated to be completed in the last quarter of 2020.



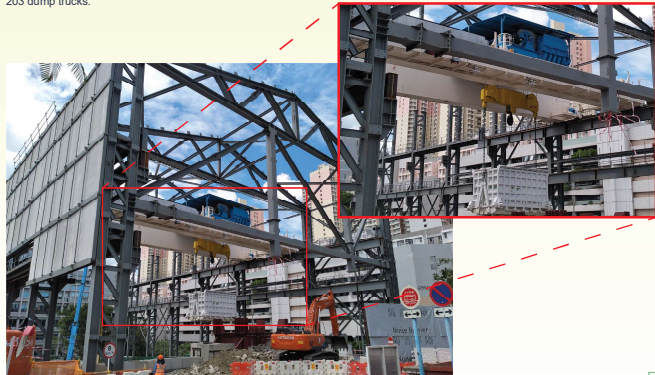
Installation of noise panels



Photomontage of temporary noise enclosure

### Gantry Crane

In order to cope with the tunneling works progress, a large-scale gantry crane was installed on top of Ho Man Tin Access Shaft. This gantry crane has replaced the previous crawler crane, which further reduces the noise impact to the surrounding neighborhood. Moreover, the maximum travelling speed of the gantry crane is up to 50m per minute, with maximum 4000 tons loading capacity per day. The maximum loading capacity of the gantry crane is now 2500 tons per day which is equivalent to the carrying capacity of around 203 dump trucks.



Gantry Crane

### Environmental Protection & Necessary Measurements

CKR-CT project team implement all necessary mitigation measures to reduce the possible environmental impacts, including construction of temporary noise enclosure to reduce the noise impacts, spraying water and washing wheels of dump trucks to suppress dust, and weeding, removing stagnant water and spraying mosquito larvicidal regularly to prevent breeding of mosquitos.



Erection of noise barriers



Construction of noise enclosure



Spraying mosquito larvicidal



Spraying on haul road for dust suppression

Electronic scale is installed in every dump truck to ensure no over-loading.

Dump trucks must complete the following procedures before leaving construction site:

- Cover the materials by impervious sheeting
- Wash the wheels and dump trucks thoroughly

In order to prevent vehicle-pedestrian conflicts, dump trucks must follow the instructions given by the traffic inspector when leaving and entering construction site.



Automatically wheel washing system is set up at entrance and dump trucks are fully covered

### Community Liaison

-  CKR-CT Contract 24-hour Hotline: 6313 0900
-  Yau Ma Tei Community Liaison Centre – Junction of Temple Street and Kansu Street in Yau Ma Tei (next to Yau Ma Tei Carpark Building)
-  Ma Tau Kok Community Liaison Centre – 12 Long Yuet Street, To Kwa Wan (Opposite to Wei Chien Court, Block H, Wyler Gardens and adjacent to To Kwa Wan Vehicle Examination Centre)
-  <http://www.ckr-hyd.hk/home/index.html>

